






Flowchart 101

These are the basic symbols and functions that are used in constructing a flowchart.

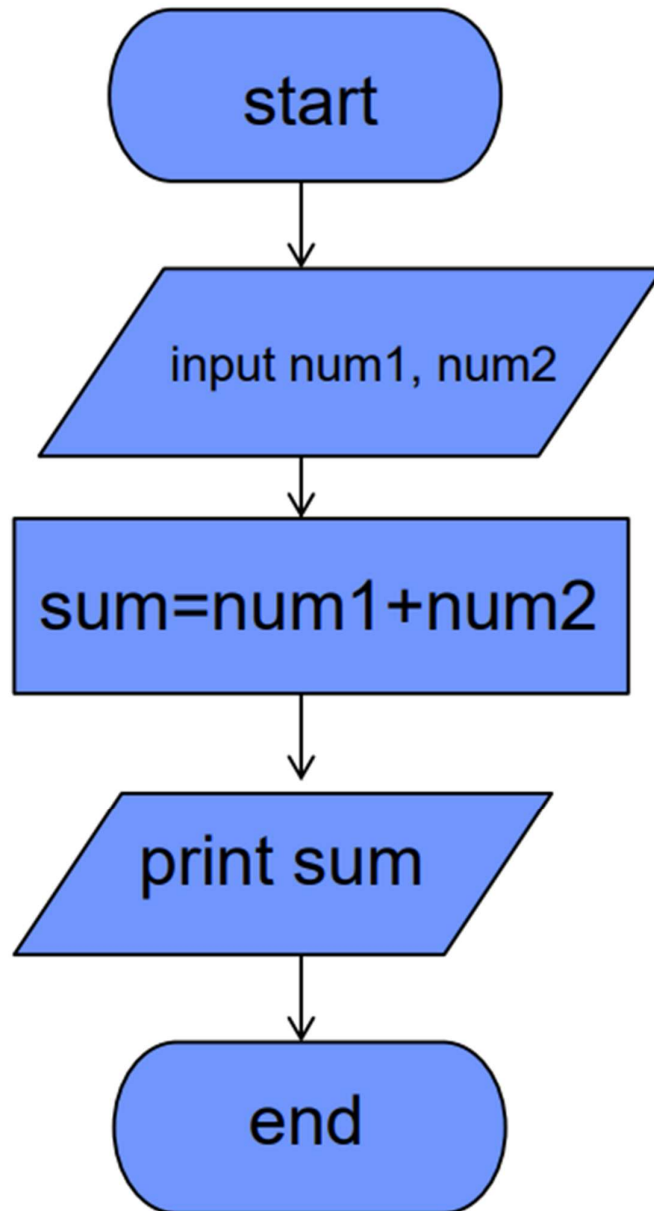
Symbol	Name	Function
	Start/end	An oval represents a start or end point.
	Arrows	A line is a connector that shows relationships between the representative shapes.
	Input/Output	A parallelogram represents input or output.
	Process	A rectangle represents a process.
	Decision	A diamond indicates a decision.

The 3 types of flowcharts that will be discussed in this week's materials are:

1. Sequential Flowchart
2. Conditional Flowchart
3. Iterative Flowchart

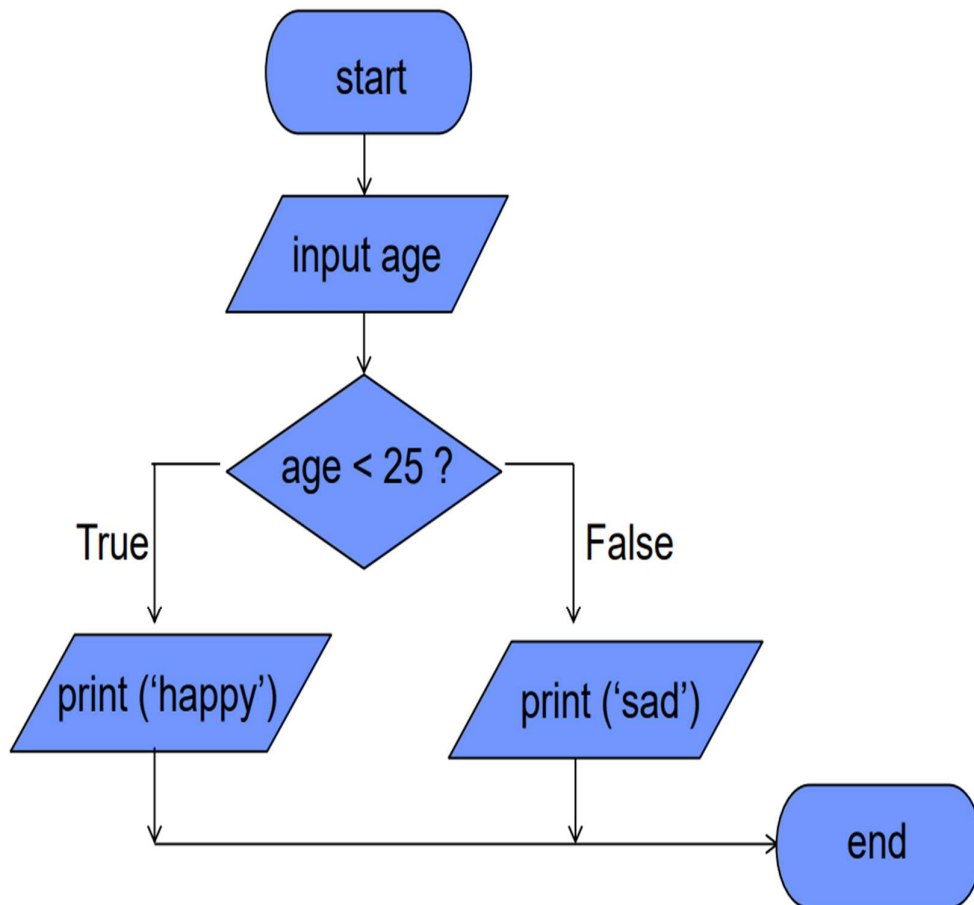
1. Sequential Flowchart

Sequential flowchart gives us the orderly/sequential procedure of a process.



2. Conditional Flowchart

A conditional flowchart is used when a condition is imposed on a problem. The condition will either be true or false. The course of the problem depends on the answer to the condition.



3. Iterative Flowchart

An iterative flowchart is where a step needs to be repeated in a process to satisfy the problem.

